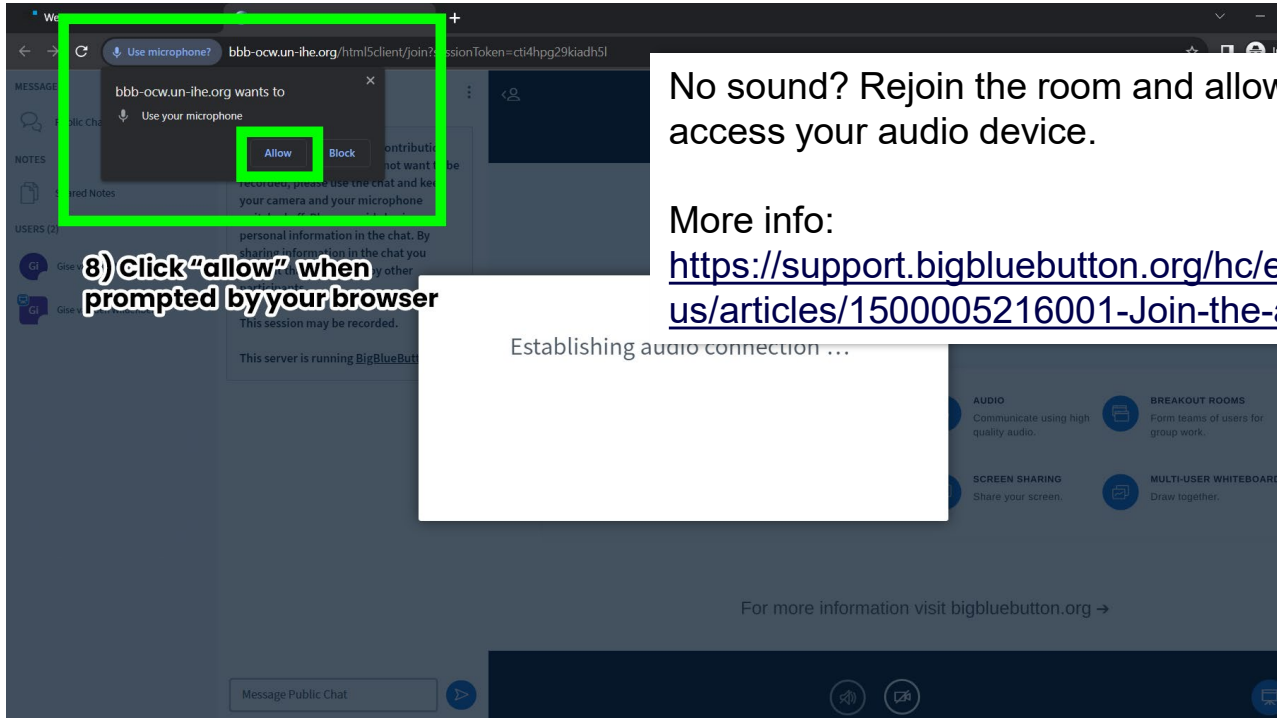


# IHE Delft

## Institute for Water Education

**Welcome to IHE Delft!**

# How to use BBB



8) Click "allow" when prompted by your browser

No sound? Rejoin the room and allow BBB to access your audio device.

More info:

<https://support.bigbluebutton.org/hc/en-us/articles/1500005216001-Join-the-audio>

Establishing audio connection ...

# Today at a Glance

- **Introductions**
- **Who is who at IHE Delft**
- **What comes next**

# Who are we?

## IHE Delft Student Affairs



**Amy Nijman**  
Student Affairs officer



**Gise van den Wildenberg**  
Student Affairs officer



**Mariëlle van Erven**  
Student Affairs officer  
Student Counselor



**Philine Korver**  
Student Affairs officer

# Where are IHE's alumni from?



# Who are you?



# Your contacts for the next months

## Student Affairs

Academic coaches

IT Service desk

Fellowship and Admissions Officer



# Student Affairs

## Email (pre-arrival)

- [ArrivalSupport@un-ihe.org](mailto:ArrivalSupport@un-ihe.org)
- [Accommodation@un-ihe.org](mailto:Accommodation@un-ihe.org)

## What we do

Student Affairs is here for all IHE students, to make studying abroad easier and to provide guidance in times of need.



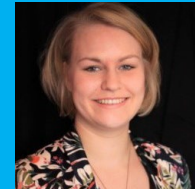
Amy Nijman



Gise van den Wildenberg



Mariëlle van Erven  
(Student Counselor)



Philine Korver



# Student Affairs and your arrival



## A warm welcome

- We welcome you at IHE on day one
- And explain how you'll get from Schiphol to Delft to your accommodation by public transport
- Join the welcome dinner on arrival day

## A smooth transition to living in Delft during your MSc

- We provide information in advance
- We help you book required appointments for administrative tasks after arrival
- We explain and simplify Dutch bureaucracy
- We act as your first contact for personal matters

## The opportunity to build your social network

- By organizing activities
- And introducing you to student networks and clubs

# Your contacts for the next months

## Student Affairs

### Academic coaches

- Help you make academic choices and ensure your academic path matches your goals and ambitions
- They will contact you shortly before your lessons start
- Several meetings throughout the year

## IT Service desk

## Fellowship and Admissions Officer



# Your contacts for the next months

**Student Affairs**  
**Academic coaches**

## **IT Service desk**

- Questions about your IHE account and IHE's websites
- You received your IHE login details from them by email.
- Email: [servicesupport.it@un-ihe.org](mailto:servicesupport.it@un-ihe.org)

**Fellowship and Admissions Officer**



# Your contacts for the next months

Student Affairs  
Academic coaches  
IT Service desk

## Fellowship and Admissions Officer

- Questions about your scholarship, flights and your residence permit (& entry visa) application
- MSc WSD (1 year):  
Marlies Baburek
- Research MSc WSD (2 years):  
Ineke Melis



# What's next

JULY - OCTOBER

## Immigration

Residence permit application process starts once you are financially admitted.

### You do:

- Preparation guide
- Information from Fellowship officer

## Admission

JULY - 31 AUGUST

## Book your flight

Only if you have to book your own flight.

### You do:

- Submit your flight info before 1 September

1 AUGUST - 17 OCTOBER

## Living in the Netherlands

Review the current website and spot the elements that need fixing or changing.

### You receive:

- Informative newsletters
- Webinar schedule

### You do:

- Join the webinars
- Get to know IHE, Delft & the Netherlands
- Join Goin' Connect and meet your classmates

Final webinar takes place on **17 October**

1 AUGUST - 31 AUGUST

## Accommodation information

### You receive:

- Accommodation manual
- Webinar about accommodation
- Activation email uh.ROOM.nl

1 SEPTEMBER - 30 SEPTEMBER

## Accommodation Booking period

### You do:

- Choose and reserve a room via uh.ROOM.nl
- Deadline: 30 September!

SEPTEMBER - 16 OCTOBER

## Sign your rental contract

- Via duwo.nl
- Deadline: 16 October!

1 OCTOBER - 26 OCTOBER

## Final preparation

### You receive:

- Detailed arrival info
- Week 1 programme

### You do:

- Pre-departure meeting
- Check the final packing list

## Arrival in Delft!

# Webinar schedule

Date	Topic
Thu 10 August	Health care in the Netherlands
Tue 15 August	AON Student Insurance
Wed 16 August	IHE Accommodation
Thu 24 August	IHE Accommodation
Wed 06 September	Health care in the Netherlands
Wed 13 September	(Public) transport
Thu 21 September	Understanding the Dutch & Cultural Awareness
Mon 25 September	(Public) transport
Fri 06 October	Student welfare and support
Tue 17 October	Student welfare and support
Thu 19 October	Pre-departure meeting

# Gezondeboel e-health platform



## Join our e-health platform now

And check out the available courses. For example:

- Living in a different culture
- Scheduling and structuring

## How to sign up

- Go to:  
<https://mijn.gezondeboel.nl/register/ihedelft/>
- Use your @un-ihe.org e-mail account to get full access to the platform.

# Curious who else is Goin' to IHE Delft?



# Goin'

Connecting your students

“  
**Goin' is a fantastic app that has helped me to connect with friends all over the globe! It will definitely help build strong friendships and share ideas!**

Sofia  
From Italy



Join the community!

[www.goinconnect.com](http://www.goinconnect.com)





**Questions?**

**Use the chat box**

**Or raise your hand!**